

Stratford *view*

Summer 2019

Walking for health

UBUS milestone journey

Supported Villages scheme



Sign up to a free diet plan to help you waste less, recycle more and earn points to win prizes for yourself and local charities.



SLIM
YOUR BIN

www.warwickshire.slim-your-bin.com



The editorial content of Stratford View is produced by Corporate Communications at Stratford-on-Avon District Council.

Contact us:
Stratford-on-Avon District Council
Elizabeth House
Church Street
Stratford-upon-Avon
Warwickshire, CV37 6HX

Tel: 01789 267575
Minicom: 01789 260747
Fax: 01789 260007
Email: info@stratford-dc.gov.uk
www.stratford.gov.uk

 Like us on Facebook:
facebook.com/StratfordDC

 Follow us on Twitter:
[@StratfordDC](https://twitter.com/StratfordDC)

Here to help

If you find the text in this magazine difficult to read we can supply it in a format better suited to your needs. We try to write everything in plain English and want to make sure that everyone has access to the information they need.

Tel: 01789 260105
Email: corporate.communications@stratford-dc.gov.uk

Stratford-on-Avon District Council does not accept responsibility for or endorse any products or services offered by advertisers. All information correct at time of printing.



When you have finished with this magazine please recycle it.

Printed on environmentally friendly paper from renewable sources.

If you run a business and you would like to advertise in the next issue of Stratford View please contact Community Information Services on 01253 885777 for rates and details.

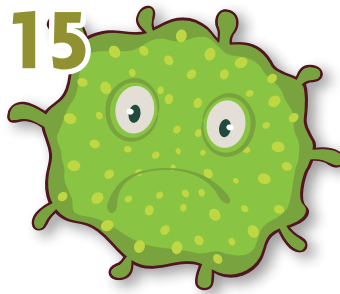
Stratford View is designed and printed by Community Information Services
Email: view@cispress.com
www.cispress.com

Stratford View is distributed by The National Leaflet Company
Tel: 0191 415 3200

Front cover image:
Stratford Health Walk

Photograph by Stuart Purfield

Stratford View



Welcome to the summer issue of Stratford-on-Avon District Council's magazine, Stratford View. This magazine is produced twice a year to keep you informed about Your District Council services. The cost of producing the magazine has been covered by advertising income and only a small amount of money has been spent on distribution. We are always keen to receive ideas for content in future issues and receive feedback on the magazine; contact us at corporate.communications@stratford-dc.gov.uk

Sign up for My District...

Your online customer account portal
Make life easier

www.stratford.gov.uk/mydistrict

With My District you can:

- access and use council services 24/7
- find useful information about your local area, including bin collections and nearest GP surgery
- tell us about any problems in your area
- pay for services
- keep up-to-date about what's going on in your area





Wheels on UBUS go round to reach **milestone journey**

Your District Council's UBUS service has just made its 50,000th journey. Among those on the milestone journey was Brenda Porter from Welford-on-Avon (pictured), who has been a UBUS user since the service began back in 2014.

UBUS is a community transport service designed for residents of any age - irrespective of where they live in the district - who are stuck for transport and need to travel locally.

It runs on weekdays between 9.30am and 2.30pm and helps residents who are either unable to access public transport because of mobility problems or other issues, or who live in an isolated location with no (or infrequent) public transport.

Now in its fifth year, UBUS has travelled 269,010 miles - or the equivalent of driving from Land's End to John O'Groats more than 300 times - and transported almost 800 people.

The top reasons for travel include: shopping, visiting local markets and getting to social activities.

The **UBUS** Service

UBUS operates on a zone basis - providing transport in different parts of Stratford-on-Avon district on specific days:

- **West of district** - Mondays, Tuesdays, Wednesdays, Thursdays and Fridays
- **East of district** - Mondays, Wednesdays and Fridays
- **South of district** - Tuesdays, Wednesdays and Thursdays
- **Stratford Town** - Mondays, Tuesdays, Wednesdays, Thursdays and Fridays

People who wish to use the UBUS service can register by phoning **01789 264491**. There's no registration charge and once registered further details of the service will be sent together with a membership number.



To book please call **01789 264491**

- subject to vehicle availability, you can book your journey up to 24 hours before you wish to travel and up to seven days in advance.

Corporate Strategy consultation

Your District Council's Corporate Strategy is a guiding document that sets the overall direction for the authority. As it is now due an update, The Cabinet has been working extremely closely with the management team to create a new draft strategy, which is due to go out for a six-week public consultation later this summer - please keep an eye on stratford.gov.uk/news for the latest.

Council Tax Help

Are you, or someone in your household, living with:

- a degenerative brain disorder such as Alzheimer's
- other kinds of dementia
- a learning disability
- a severe stroke
- severe or chronic mental illness

and are entitled to one of the following benefits:

- Employment Support Allowance
- Severe Disablement Allowance
- increased Disability Pension
- Personal Independence Payments (PIP)
- Income Support that includes a disability premium
- the care component of high or middle rate Disability Living Allowance
- Constant Attendance Allowance
- Incapacity Benefit

then you may be entitled to a Council Tax discount



and save money off your Council Tax bill

For more information please contact Revenues on:

01789 260990

revenues@stratford-dc.gov.uk





Young Traders Market National Final

Stratford-upon-Avon is to host the prestigious National Young Traders Market in August.

Markets are ideal platforms to launch new start-up businesses and The National Market Traders Federation (NMTF) works with operators of traditional retail markets across England to offer trading opportunities and business support to entrepreneurs between the age of 16 and 30.

It is a collaborative approach to help nurture young talent, which advocates market trading as a business model while encouraging the next generation of entrepreneurs to trade on the nation's traditional retail markets.

Best of all - it's a competition! There are big prizes to be won for young traders who make it all the way to the national finals; plus

big kudos for the operators who help to get them there.

Local heats were held across the country during May and June with the best traders from these markets now featuring at regional young traders markets during July and August.

The best of the best then go on to the National Young Traders Market final, which will be held on 30 and 31 August in Stratford-upon-Avon.

This is the second year the final has come here and Your District Council, together with Stratford-upon-Avon Town Council, is happy to support the event, which promotes young people in business.

Your Pest Control service

Want a highly trained and professional pest control service?

Call Your District Council's Pest Control officers, who can treat a wide range of pests including: rats, mice, squirrels, fleas, bedbugs, wasps/hornets, cluster flies, carpet beetles, and clothes moths.

To book a treatment please call Your District Council on **01789 267575** or visit www.stratford.gov.uk/environment/pest-control.cfm

Your District Council's pest control team also offers contracts to businesses and farms.

Each contract is tailored to your needs and will help to keep your business pest-free throughout the year.



YOUR HOME IN THE COTSWOLDS

PHASE 3 JUST RELEASED



Leedons Residential Park is a pleasant ten minute walk from the picturesque village of Broadway. With its shops, banks, Post Office, cafes and restaurants, Broadway is nestled amongst stunning countryside beneath the Cotswold escarpment and overlooked by Broadway Tower. Leedons is truly countryside living with a diverse range of wildlife inhabiting the Park it holds the prestigious Gold Award for Conservation, awarded by David Bellamy.

- Indoor Swimming Pool
- 3 Rink Bowling Green
- Tennis Court
- Large Social Hall
- One Mile from Broadway
- Sympathetic Countryside Development

Childswickham Rd,
Broadway, WR12 7HB
WWW.ALLENSCARAVANS.CO.UK
01386 852423




THE SHAKESPEARE EXPRESS

SUMMER SUNDAYS 21st JULY, 4th & 18th AUGUST, 1st & 15th SEPTEMBER
BIRMINGHAM - STRATFORD-UPON-AVON - BIRMINGHAM

FOR DETAILS AND TO BOOK WWW.SHAKESPEAREEXPRESS.CO.UK

Are you a charity or community group that needs a space to come together in Stratford town?



**Join us at
FOUNDATION HOUSE**

A SPACE TO CREATE,
SHARE IDEAS AND MAKE
A DIFFERENCE

www.foundationhouse.co.uk
Call us on 01789 295011



Stratford
Town Trust
at the heart of our community



Just imagine feeling
spoilt for choice.

You deserve a little luxury in later life. And it shouldn't cost the earth either... **Austin Heath is located between the cultural hubs of Warwick and Royal Leamington Spa,** and offers a choice of **stunning homes from £227,000 to £516,000**, with your very own wellness spa, bistro-café, landscaped gardens, village concierge and maintenance team, plus care and support as and when you need it.

This is more than luxurious. This is Inspired.

Call **01926 683 517**

www.austinheath.co.uk/lc01

Gallagher Way, Warwick, CV34 6AF

Austin Heath
Inspired in Warwick

CARPETWISE

CURTAINWISE · FURNITUREWISE

wharf road, stratford upon avon. CV37 0AD
FREE PARKING OUTSIDE OUR LARGE SHOWROOM

Home of Stylish Interiors



restful sleeping



beautiful flooring

t:01789 299446

INTEREST FREE CREDIT AVAILABLE

0%
APR
TYPICAL

Minimum order value of £500 and subject to status. UK residents only. Ask in store for more details.

Extra Save Discount Terms & Conditions

*The 10% discount offer is valid as an extra discount on our main sale items but excludes clearance sale ranges, carpet stock ranges & carpet remnants, excludes accessories, fitting and seamstress charges, only one voucher per household and must be presented on first enquiry, for further details telephone, email or visit the showroom.



stylish windows

to save an extra
10%*
off a new order
quote "summerview"
on enquiry

carpets | rugs
karndean | hard flooring
curtains | blinds | bed linen
furniture | home accessories
beds | mattresses
soft furnishings



Karndean
Designflooring

FREE floor estimating

Professional flooring installation & furniture moving service available

www.carpetwise.net

Start something brilliant!

At Warwickshire County Council, we launch careers.

We offer an array of apprenticeships in a large number of professions, covering a range of levels. From entry level opportunities to higher apprenticeships, we've got so much to offer!

Every apprenticeship we provide is designed to give you the skills, knowledge and behaviours required to progress into further employment with us at Warwickshire County Council.

Over 200
apprentices
recruited
since 2012

76%
of our
apprentices are
retained
by WCC

95%
of our
apprentices
stay in
employment
or **education**

96%
would
recommend
an
apprenticeship
at WCC



“

Completing my apprenticeship has given me great confidence and I have learnt to push myself further”

“

Applying for my WCC apprenticeship was a no brainer!”

“

Doing this apprenticeship has allowed me to turn my passion into a career”

“

Who wouldn't want to get paid for something they enjoy?”

“

The hands on nature of an apprenticeship means that you do a lot more than you would just sitting in a classroom”

Your guide to household recycling



Items that **CAN** be recycled from your blue-lidded bin or black box:

- Empty, clean plastic pots, tubs and trays of any colour
- Empty, clean cartons and Tetra Paks
- Empty, clean glass jars and bottles with or without lids
- Paper and cardboard
- Empty, clean tins and cans
- Empty aerosols
- Clean foil and foil trays
- Empty plastic bottles



Items that **CANNOT** be recycled from your blue-lidded bin or black box:

- Nappies
- Shredded paper
- Metallic plastics used for crisp packets and pet food pouches
- Any sort of food waste
- Scrap metal, such as baking trays, pans and car parts
- Plastic bags and film
- Electronics
- Expanded polystyrene
- Textiles
- Crockery, cutlery and drinks glasses

! *Textiles, batteries and small electrical goods can be recycled by putting them in a tied, standard-sized carrier bag placed next to any wheeled bin on your normal collection day.*



Maximise the use of your green bin.

Items that **CAN** go in your green bin:

- All food waste
- Grass cuttings
- Shrub / hedge cuttings
- Plants, flowers, leaves and prunings
- Bedding from non-meat eating pets
- **NO** rubble
- **NO** soil
- **NO** turf



Visit www.stratford.gov.uk/recycling for more on our recycling service, including a full guide to what you can and can't recycle as part of your kerbside collection.

Follow us on Facebook and Twitter for daily hints and tips on recycling and information about environmental issues.

  #RecycleRight #EnviroRight



Stratford-on-Avon District Health Walks Programme

Walk	Meeting Point	Time and Duration	Further Information
Mondays at Stratford-upon-Avon	Stratford-upon-Avon Leisure Centre CV37 6YX	10am, lasting 30-60 minutes	This walk takes in the paths around the Recreation Ground, alongside the River Avon and the canal.
Mondays at Bidford-on-Avon	Next to the Bridge Restaurant B50 4BG	10:30am, lasting 60-90 minutes	The group often splits to accommodate both faster and slower walkers. This walk varies between a small number of popular scenic routes.
Tuesdays at Southam	Southam Leisure Centre CV47 0JW	2pm, lasting 60-90 minutes	The walk goes through the town and out to local parks and historical attractions such as the Merestone, the Holy Well, and along parts of the Heritage Trail.
Wednesdays at Stratford-upon-Avon	Stratford-upon-Avon Leisure Centre CV37 6YX	10am, lasting 60-90 minutes	The group often splits into two to accommodate faster and slower walkers. Walks include the tramway and Recreation Ground or by the canal and river, on mainly flat pathways.
Fridays at Wellesbourne	Wellesbourne Village Hall CV35 9NH	9:45am, lasting 75-90 minutes	This group frequently chooses to start and finish the walk outside Wellesbourne (so the start time of the walk will vary). Please contact the Leisure team to find out about the plan for the next walk.

Our Ramblers Walking for Health walks are free to all and do not require pre-registration.

To join one of our walks, arrive ten minutes before the start and let the walk leader know you would like to join.



Further information:

www.stratford.gov.uk/sport-leisure-arts

T: 01789 260115

E: leisure@stratford-dc.gov.uk



**spinal
muscular
atrophy uk**

Help for today, hope for tomorrow

Spinal Muscular Atrophy (SMA) is a rare inherited neuromuscular condition.

There are several distinct types which vary in severity. It may affect crawling and walking ability, arm, hand, head and neck movement, breathing and swallowing.

At any one time there are 2,000 - 2,500 children and adults in the UK living with SMA. Approximately one in 40 - 60 people carry the SMA gene. This is about 1.5 million in the UK. Spinal Muscular Atrophy Support UK offers an information and support service to anyone in the UK affected by SMA.

We also work with other charities, clinicians and researchers to fund and draw attention to the need for more to be spent on research. This includes how to manage better the symptoms of SMA, improve our understanding of the disease mechanisms and testing of potential treatments.

Help us to continue our essential work, donate now



www.smauk.org.uk | smauk.org.uk/donation/your-donation

On the beach On the house

Free sun tint
+ UV filter
with 2 for 1
from £69



Book an eye test at specsavers.co.uk

Stratford-upon-Avon 8 Wood Street Tel 01789 262 606
Alcester 36 High Street Tel 01789 764 705 - **Now Open**



Ends 30 September 2019. Cannot be used with other offers. Second pair from £69-£169 ranges, from the same price range or below and to the same prescription with free tinted prescription lenses and UV filter - usually £24. **£69-£169 ranges:** standard 1.5 single-vision lenses included in both pairs. Varifocal/bifocal: you pay for the lenses in your first pair only. **£169 Fineform and Rimless ranges:** standard 1.6 single-vision lenses included in both pairs. Varifocal/bifocal: you pay for the lenses in your first pair only. All lenses scratch-resistant. Extra Options available at an additional charge on both pairs. Excludes safety eyewear.



Residential,
dementia and
respite care

Why make a WCS care home your new home?

- ✓ Personal high quality care
- ✓ Dedicated and friendly staff
- ✓ Homely feel with a family atmosphere
- ✓ Appetising home-cooked meals
- ✓ Daily activities led by our enthusiastic Lifestyle Coaches
- ✓ No hidden charges

www.wcs-care.co.uk

/wscare

@WCS_Care

The Limes

Alcester Road
Stratford-upon-Avon
CV37 6PH
01789 267076

Registered charity number 1012788



The Big Wheel Company

WE OPERATE AND HIRE PORTABLE THEME PARK ATTRACTIONS AND AMUSEMENT RIDES THROUGHOUT THE UK



ALL OF OUR RIDES CARRY FULL PUBLIC LIABILITY INSURANCE, TEST CERTIFICATES AND RISK ASSESSMENTS

07836 232748 www.bobwilsonfunfairs.co.uk

Southam Country Stores

For All Your Beaks, Paws And Claws

- Stockists of all premium pet foods
- Large range of accessories
- Bulk wild bird & horse feeds
- Cage & aviary birds
- Small animals
- Aquatics & fish
- Rabbits & guinea pigs



FREE LOCAL DELIVERY

Westfield Road, Southam, CV47 0JH | 01926 815054

www.southamcountrystores.co.uk

**The Law Firm That Puts Clients First....
Here when your needs change**

Penmans

SOLICITORS LLP

Are you looking for advice on Family Matters?

Contact our Family Lawyers for professional, practical and confidential advice.

Initial 1/2 consultation free.

Kenilworth 01926 858222

30/32 Warwick Road, Kenilworth CV8 1GW

Coventry 024 7622 6575

17a Queens Road, Coventry CV1 3DH

Wellesbourne 01789 470022

The Precinct, Wellesbourne, CV35 9NL

www.penmanssolicitors.co.uk

We also provide legal services for Residential & Commercial Conveyancing, Wills & Probate, Powers of Attorney, Estate Administration, Inheritance Tax & Trusts, Clinical Negligence & Personal Injury Claims, Criminal Defence (24 hour police station attendance)



Come & try your first class FREE

MOVE IT OR LOSE IT!

Turn back the clock with our fun and friendly exercise classes to improve your

- ✓ balance & confidence
- ✓ mobility & flexibility
- ✓ strength & independence

COME AND JOIN US!

Classes are held in and around the Stratford-upon-Avon area and you can join at any time.

Classes cost £5

Contact Lesley Natrins for more details or to book a place
Tel: 07801 265599;
Lesley.natrins@moveitorloseit.co.uk

Regulating animal welfare

Your District Council has a long history of licensing certain businesses involving animals, but until the introduction of the Animal Welfare (Licensing of Activities Involving Animals) (England) Regulations on 1 October 2018, the systems had not been changed by Government for almost 50 years.

The introduction of the new regulations, which are designed to help raise standards of animal welfare, means some activities that did not previously require a licence now do.

The five areas of licensed activities with animals by businesses are:

- selling animals as pets
- providing or arranging for the provision of boarding for cats or dogs
- hiring out horses
- breeding dogs
- keeping or training animals for exhibition

Some advantages of the licensing system:

- Premises may only be inspected by suitably qualified and experienced officers.
- The inspection criteria are now set centrally by the Department for Environment, Food & Rural Affairs

(DEFRA) and are designed to deal with every aspect of an animal's welfare.

- The inspectors will risk rate a premises and, depending on the standard of animal welfare they find, the premises will then be awarded a 'star rating' from one to five stars. Lower rated establishments will have shorter licences and require more frequent inspections.

This rating will be displayed on the licence for the premises, and on Your District Council's website, allowing the public to check the ratings.

The new regulations have resulted in a number of changes. Below are some of the things Your District Council advises you to look out for when considering buying a new pet:

- Puppy sales must be made in the presence of the prospective buyer (no online sales) and the puppy must be shown alongside the biological mother of the puppy.
- Puppies, kittens, ferrets or rabbits under the age of eight weeks may not be sold.
- Unweaned mammals cannot be sold, or mammals that have been weaned before they should have been.

- Licence holders cannot advertise for sale a dog they haven't bred themselves.
- Puppies must not be advertised by a breeder without:
 - their breeder licence number (issued by Your District Council)
 - the name of the issuing authority
 - a recognisable photograph of the dog
 - the dog's age

If you are using a business involving animals, check they are licensed and have been inspected by Your District Council and be sure they are operating lawfully and providing appropriate standards of animal welfare.

If you think you might need a licence to run a business involving animals please contact Your District Council's Licensing team on:

01789 267575 or email licensing@stratford-dc.gov.uk



Your health, our food safety

The Environmental Health Food and Safety team is part of Your District Council's regulatory services. The team carries out a wide range of statutory and advisory functions to ensure all food produced, prepared and sold in the district is safe and without risk to health.



What do we do?

The Food and Safety Team works hard to ensure that, when residents dine out, the food they eat is safe and that, if things do go wrong, they are dealt with effectively.

The team enforces legislation to ensure legal compliance and uses a range of interventions, from advice and education through to closure of businesses and prosecution in the worst cases. It also investigates cases of notifiable diseases such as food poisoning to prevent disease spreading and more people becoming ill.

Success story – Your District Council investigates suspected food poisoning outbreak

The team recently dealt with a case involving members of a party attending a function at a local hotel, which resulted in 42 of the 73 people suffering with diarrhoea and vomiting.

The food safety standards at the hotel were assessed but were shown to be satisfactory.

The Food and Safety team took a large number of food samples and swabs from the kitchen and results showed these were also free from food poisoning bacteria.

Advice was given on cleaning regimes at the hotel, as additional cleaning and disinfection are required during outbreak situations.

Food histories were taken from a large number of the party in a bid to identify common food sources. In addition, they were given hygiene advice and checked to ensure they weren't in occupations where there was a high risk of passing the illness onto others.

Stool samples were arranged for analysis, both directly with the patients and through a number of other local authorities, while other premises were visited where members of the group had previously eaten.

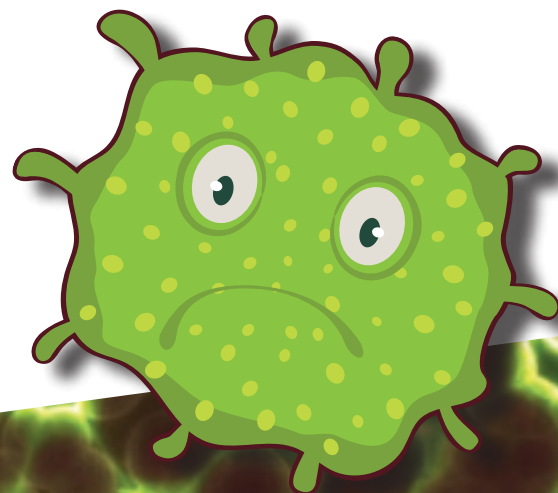
All this data was gathered and the team liaised with colleagues at Public Health England to ensure that all sensible courses of action had been followed.

When the stool samples were analysed, it was established there had been an outbreak of norovirus – a highly contagious stomach bug, which spreads directly from person to person.

As one member of the party had become ill shortly after arrival, it was deemed most likely they were already incubating the illness and had inadvertently passed it onto other members of the group.

After a short monitoring period to ensure there were no further cases, the investigation was closed and the hotel was not held responsible.

Although it wasn't on this occasion, in cases where the cause of an outbreak is food poisoning, such swift and robust action from the Food and Safety team would have helped to identify the source, and in turn, prevent more people becoming ill.



Empowering people ensuring inclusive

Your District
recognised a
Confident

Accessible facilities at our Leisure Centres in Shipston, Southam, Stratford-upon-Avon and Studley include:

- Blue Badge parking bays
- easy entrance access
- accessible reception desks with hearing loops
- dedicated changing rooms
- accessible showers
- accessible toilets
- pool hoists with sloping steps and adjacent handrails to help users get in and out of the water
- gyms with Inclusive Fitness Initiative accredited equipment
- wide range of additional activities, opportunities and events where everyone is welcome



Stratford-upon-Avon also has:

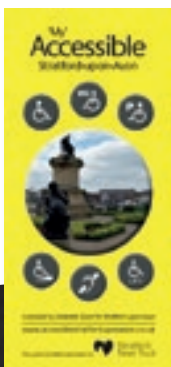
- a Changing Places toilet
- accessible cubicles by the main swimming pool
- accessible counter in the café
- lift access to the first floor, leading to gym and pool spectator area with space for pushchairs, wheelchairs and mobility scooters



For more information, please see www.everyoneactive.com

Wheelchair accessible licensed Hackney Carriage fleet, with all drivers required to attend disability awareness training to help them assist people with a range of disabilities.

All council buildings with public access comply with **AccessAble** accessibility recognition – such as contrasting colour entrances, ramps and low threshold access ways, low level desking and trained staff to support with hearing and sight difficulties.



Accessible Stratford's Elizabeth Dixon has just updated the 'My' Accessible Stratford-upon-Avon guide, supported by Stratford Town Trust. Copies are at Shopmobility and the Visitor Information Centre and can be downloaded from www.accessiblestratforduponavon.co.uk

Your District Council can provide publications and leaflets in alternative formats best suited to individual needs. Please contact us for details.

Your District Council is continuously working, always ensuring that the com the heart of how it works, the decision

Your District Council is commi its services and is taking act ensuring equal access a

Here's a snap sho services offered inclusiveness and people with d

Stratford Shopmobility service

Bridgeway car park, CV37 6YX. Mobility scooters, wheelchairs and other equipment available for hire - call **01789 414534** or see www.stratford.gov.uk/shopmobility for charges and more information

with disabilities and
ness and equality

ct Council is
s a Disability
employer.



Contact us:

Telephone: 01789 267575

Minicom: 01789 260747

Looking at new and different ways of
communities of Stratford-on-Avon are at
as it makes and the services it provides.

mitted to improving equality in
ive steps to create equality,
nd opportunity for all.

ct of some of the
d to ensure
l equality for
isabilities.



AccessAble - an online accessibility guide
giving details of how accessible venues are -
www.accessable.co.uk

UBUS - a community transport scheme
enabling wheelchair users or those with
mobility issues to travel independently -
www.stratford.gov.uk/ubus.



Access to voting:

- Accessible polling stations
- Availability of postal votes
- Tactile templates in all polling stations to assist people who are blind or who have sight impairments
- Large print ballot papers at all polling stations
- Presiding Officers at polling stations can assist voters with physical or learning difficulties

Dementia services:

- Dementia services leaflet - listing all the dementia cafés and carers' services in the district www.stratford.gov.uk/dementia
- Dementia Voices group
- Local Dementia Arts Network



Assisted bin collection service for those
who, due to age, infirmity, disability or a medical
condition, are unable to leave their wheeled
bins, recycling boxes or sacks in the normal location
on the property boundary for collection
www.stratford.gov.uk/assistedcollection



Free workshops for local businesses

A new programme of varied workshops has launched at Venture House as part of Your District Council's strategy to support local businesses in the district.


Initially the programme will consist of eight three-hour workshops that businesses can dip into, which will include such topics as Sales and Marketing Skills, Planning for Growth, Social Media, Negotiating Skills and Goal Setting, the plan then being to continue the programme after a pilot review.


These free workshops are available to businesses located in the Coventry and Warwickshire area and are booked via the Venture House website and social media channels.

Additional free workshops are also run at Venture House by the Chamber of Commerce for New Business Start-ups and ICT Support, as well as the venue hosting a number of public events organised by private companies.

Keep an eye on our Events Calendar to stay up-to-date with the new workshop dates.

www.venturehousestratford.co.uk

 @VentureHouseStratford

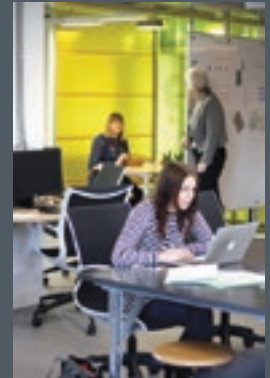
 @VentureHouseSUA

Do you work from home? Are you starting or running your own business?

Venture House Business Centre can help you and your business with:

- Flexible and inspiring co-working space
- Great value meeting/training facilities
- Easy-in-easy-out serviced offices
- Access to business support and advice
- Small business start-up programme
- Informal and friendly free networking
- Various workshops and events
- Free parking and easy access to the A46 and M40

TRIAL A HOTDESK DAY FOR FREE!



To find out more call
01789 207500

Venture
HOUSE STRATFORD-UPON-AVON

venturehousestratford.co.uk



Coventry & Warwickshire
Local Enterprise Partnership



Venture Co-working CLUB

Want to co-work with
like-minded businesses
over the summer?

Come along to the fortnightly Venture Co-working Club where you can bring your laptop and work, meet with others, exchange ideas and collaborate.

Our aim is to bring home workers, freelancers and small/micro business owners together in an informal way to maximise creativity and minimise the isolation that being your own boss can often bring.

Sessions will be held on 4 and 16 July and 1 and 20 August, between 10am and 3pm. A local business advisor will also be present to chat with you and provide tips and advice on how to help you and your business.

For further details and to book:
www.bit.ly/venturecoworkingclub

Donut Time networking



Venture House's monthly business networking event is going from strength to strength with around 30 businesses attending each month.

The benefits of networking are quite apparent with regular faces enjoying the connection with other local entrepreneurs and small business owners. New faces are always welcome and, if networking is new for you, don't worry, we'll guide you through! Guest speakers introduce a new topic each month, several businesses get the chance to be in the spotlight, and there is also the opportunity to promote events and activities that you're involved with. Book early, because this event is popular and we wouldn't want you to miss out!

Held on the second Wednesday of each month at 10am; book your space for the next event at www.bit.ly/donuttimevh

VENTURE HOUSE PROVES BENEFICIAL FOR MEDIA COMPANY

www.writeanglemedia.co.uk

A journalist who branched out into the world of PR and media with his own company has talked about the benefits of hotdesking.



David Lawrence created Write Angle Media in 2000 after a number of years working for the Worcester Evening News and Coventry Telegraph.

He discovered Venture House Business Centre in December 2016 when he needed workspace on a more ad-hoc basis.

“I had tried permanent offices in the past, but didn’t spend enough time in them to warrant it,” he said. “So Venture House seemed like a perfect solution with its hotdesking facilities meaning I could have the flexibility I needed.

“You can pay as you go, so it means that you are not constrained by time, there’s free Wi-Fi, which is an added bonus, along with free parking.

“Another positive with Venture House is the fact that if you need something a bit more private for a period of time, there are also the small offices upstairs as well.

“Other facilities such as the chill zone, meeting space and staffed reception are a real benefit too.”

Venture House is Your District Council’s business centre which opened on the Avenue Farm Industrial Estate in Birmingham Road in 2016 after receiving £450,000 of funding from the Government’s Local Growth Fund through the Coventry and Warwickshire Local Enterprise Partnership (CWLEP).

Unexpected benefits

There have been a number of added benefits that David has experienced since hotdesking at Venture House and they came as a pleasant surprise.

“Venture House is so much more than just a temporary base that can be used by business people,” David added.

“I saw it as a convenient office space, but there is so much more added value to it than that such as the networking opportunities that it offers.

“The events that are hosted at Venture House have also been extremely worthwhile for meeting new people and getting business ideas.”

David will continue to produce the sports reporting he is known for across the region, but will be pushing the news side as he also continues working for the Local Democracy Reporting Scheme in conjunction with the BBC.

Flexible working space

Anne Solomon, Business Centre Administrator, said:

“Our facility is an innovative space and can work better than traditional commercial spaces as people can come and go as they please and pay for the time that they spend here.”

“Venture House also provides free business support from advisors at the Coventry and Warwickshire Local Enterprise Partnership Growth Hub as well as a busy event calendar with monthly networking events, a variety of largely free workshops and a new Co-working Club.”

ABOUT THE LOCAL GROWTH FUND

Local Enterprise Partnerships are playing a vital role in driving forward economic growth across the country, helping to build a country that works for everyone.

That’s why by 2021 Government will have invested over £12bn through the Local Growth Fund, allowing LEPs to use their local knowledge to get all areas of the country firing on all cylinders.

Analysis has shown that every £1 of Local Growth Fund invested could generate £4.81 in benefits.

LEPs are investing in a wide range of projects informed by detailed analysis of the most pressing economic needs in each of their areas, including transport, skills, business support, broadband, innovation and flood defences.

For further information visit: www.cwlep.com



CRIME

Three in five UK hate crimes go unreported
Never tolerate it
Always report it

reportthatenow.com

Produced by the Safe In Warwickshire partnership

If you are experiencing domestic violence, you are not alone.



Refuge-Domestic Violence Service
Warwickshire Helpline 0800 408 1552

Our services include:

- Emergency safe accommodation for women and children
- Independent domestic violence advocacy for men and women navigating the legal system
- Outreach support for men and women in their own homes, in the community
- Drop-in services
- A 10 week women's group work programme
- Sanctuary scheme - providing additional security within a property



DVSW@refuge.org.uk
In an emergency always call 999.

Image © Julian Niemann for Refuge



Warwickshire Library and Information Service

Joining the library is **FREE** and all of this too!

- Borrow books, talking books & large print books
- 24/7 access to online library services
- eBooks, eMagazines, eNewspapers & eAudio
- Information & signposting services
- Rhyme Time and Story Stomp sessions for under 5s
- Wifi and computer access
- Plus much more...

Opening Times

Alcester	Mon, Wed, Thurs, Fri: 9.30 - 17.30 Sat: 10.00 - 16.00 (Limited service 13.00 - 16.00)
Shipston	Mon, Sat: 9.30 - 12.30. Tues, Thurs: 9.30 - 12.30, 13.30 - 17.30
Southam	Mon, Tues, Thurs, Fri: 9.30 - 17.30. Sat: 9.30 - 12.30
Stratford	Mon, Tues, Wed, Thurs, Fri: 9.00 - 17.00. Sat: 10.00 - 15.00
Wellesbourne	Mon, Sat: 9.30 - 12.30. Wed, Fri: 9.30 - 12.30, 13.30 - 17.30



www.warwickshire.gov.uk/libraries
0300 555 8171





Stratford-upon-Avon Neighbourhood Development Plan 2011-2031



Stratford-upon-Avon Town Council

Neighbourhood planning

Neighbourhood planning was introduced through the Localism Act of 2011.

A Neighbourhood Development Plan (NDP) is designed to help establish a vision and planning policies for an area as well as proposals for the future development and use of land.

The policies within an adopted or 'made' NDP are a significant consideration when Your District Council makes decisions on planning applications within that area.

As Stratford District is a parished area, NDPs in the district are developed by communities in partnership with their town or parish council.

It is up to individual communities to decide whether they wish to produce an NDP or use other existing planning tools (such as parish plans or village design statements) to achieve their aspirations.

Since 2012, a considerable amount of community work has taken place to produce NDPs.

This continues with an ever-increasing number of additional plans now reaching the latter stages of the legislative process in addition to those that have previously been adopted.

Thirteen Neighbourhood Plans have been 'made' to date, and these form part of the Development Plan for the district alongside Your District Council's Core Strategy.

'Made' NDPs cover the following parishes:

- Bidford-on-Avon - adopted 17 July 2017
- Ettington and Fulready - adopted 17 December 2018
- Harbury and Deppers Bridge - adopted 17 December 2018
- Kineton - adopted 24 October 2016
- Long Compton - adopted 25 April 2016
- Salford Priors - adopted 17 July 2017
- Shipston-on-Stour - adopted 15 October 2018
- Snitterfield - adopted 24 April 2018
- Stratford-upon-Avon - adopted 17 December 2018
- Welford-on-Avon - adopted 27 November 2017
- Wellesbourne and Walton - adopted 17 December 2018
- Wilmcote and Pathlow - adopted 26 February 2018
- Wootton Wawen - adopted 26 February 2018

A number of other plans are continuing to progress through the various statutory planning stages – culminating in referendum and, if approved, eventual adoption.

- Alcester
- Bearley
- Beaudesert and Henley-in-Arden
- Claverdon
- Clifford Chambers and Milcote
- Ilmington
- Loxley
- Napton-on-the-Hill
- Tysoe

SHINEBRIGHT OVEN CLEANING

You Cook - We Clean

With Shine Bright Oven Cleaning your oven will be virtually like new! We cover Stratford-upon-Avon, Warwickshire and beyond!



Specialist cleaning of ovens, carpets, upholstery, hardfloors & rugs

Put the shine back into your oven – call **Richard** on **07801 442523** or visit www.shinebrihtovencleaning.com



Alveston Leys, your local Bupa care home

We provide care for:

- ✓ Nursing
- ✓ Residential
- ✓ Short stay
- ✓ Convalescence
- ✓ Palliative
- ✓ Day care

To find out more, call us on **01789 867174**

Lines are open 8am to 6.30pm Monday to Friday, 9am to 12.30pm Saturday. Closed Sundays and bank holidays. We may record or monitor our calls.



**For care homes.
For Living**

Alveston Leys Care Home

Kissing Tree Lane
Alveston
Stratford-upon-Avon
CV37 7QN

CS 01138 Q118782



For more info & to book your **FREE CONSULTATION** Call reception on **01926 817264**



Dental Implants

Implants are a fantastic option for replacing a missing tooth or to secure loose dentures. Here at Cedarlea we use the best Implant system on the market.

Once placed an Implant can transform your mouth and improve your chewing function. This can have an impact on your overall wellbeing.

Adult Orthodontics (Braces)

You are never too old to have perfectly straight teeth. Orthodontic treatment is used to improve the appearance, position and function of crooked or abnormally arranged teeth using braces. Braces come in many different types and can be fixed, removable and clear.

FREE DELIVERY



Giving you the reassurance needed for you to live independently

- 24/7 monitoring service from our friendly local team, trained to take prompt action whenever you need it
- Elegant and discreet personal alarms
- Key safes
- Fall detectors



Introducing **FOOTPRINT** our clever new Tracking Device with SOS button and falls detection for when you are out and about.

Contact us for more information and to arrange a free 14 day home trial

T: 01926 339577

E: lifelineservices@warwickdc.gov.uk

www.warwickdc.gov.uk/lifeline



TSA Member Organisation

Scholars Mews Care Home For The Best In Quality Care

One of Stratford's best kept secrets on a quiet lane on the centre of this historic town, Scholars Mews is a true home-from-home and the only care home in the area to have been accredited a double gold in the CAP Awards for both Catering and Housekeeping, evidencing its first class resident services.

Scholars Mews is also assessed as 'Good In All Categories' by the Care Quality Commission (CQC), a true reflection of the quality of care delivery and resident services from a dedicated and professional staff team.

For the best in residential and dementia care for your loved one.

Call 01789 297589 or Search 'Scholars Mews Care' online or on 



23-34 Scholars Lane
Stratford-Upon-Avon
Warwickshire | CV37 6HE



2018 WINNERS
• Best Large Care Home Group
• Social Activities & Well-being
• Best for Food, Nutrition & Dining
• Best for Training & Development



SAVE TIME

2 NEW SERVICES FOR ALL RESIDENTS



Did you know you can now claim
Housing Benefit online. Go to
www.stratford.gov.uk

If you want to make a payment
for Council Tax or Business Rates
use our dedicated payment line
0345 600 6956

24 hours a day / 7 days a week / 365 days a year



BANCROFT GARDENS

RESIDENTIAL HOME



Find true care in our residential home in Stratford-upon-Avon

At Bancroft Gardens Residential Home we employ an experienced team who maintain the highest standards of care, whilst ensuring a happy and relaxed atmosphere at all times. For more information please contact us.
Gold Standard Framework Silver Award - Investors in People Silver Award

Tel: 01789 269 196

Waterside, Stratford-upon-Avon, CV37 6BA
www.bancroftgardensresidentialhome.co.uk

ACCOUNTING DATA SERVICES LIMITED



01295 670770 admin@adsoffice.co.uk
Your Stratford area Accountancy firm for **ALL** your needs

Pre Start Ups: Expansion: Closure: Profits: Tax: VAT: Wages:
Personal, Qualified, Experienced, Cost Effective, Friendly Team
Sole Traders, Partnerships, Limited Companies

Look out for your Electoral Registration form

...and update it online or return it to us



www.householdresponse.com/stratforddc

YOUR VOTE MATTERS

DON'T LOSE IT



THE ARDEN HOTEL



Located in the heart of historic Stratford-upon-Avon, The Arden Hotel is an elegant and sophisticated 45 bedroom boutique hotel in the birthplace of William Shakespeare.

No 44, offers guests a variety of 'small plates' to share amongst family and friends whilst kicking back and soaking up the relaxed atmosphere and creating a truly unique dining experience in Stratford upon Avon.

Pre-theatre dinner bookings are taken between 5.00pm and 5.45pm. Guests may return after the performance for dessert and coffee.

TO BOOK PLEASE CALL 01789 298682



Waterside, Stratford-upon-Avon CV37 6BA
WWW.THEARDENHOTELSTRATFORD.COM

[f /thearden](https://www.facebook.com/thearden) [@ardenhotelstratford](https://www.instagram.com/ardenhotelstratford) [@ardenhotel](https://www.twitter.com/ardenhotel)

Dimension Landscape & Driveways

Yew Tree Cottage, Box Trees Road, Hockley Heath, Dorridge B94 6EB

Why not invest in a new driveway or patio to enhance the appearance and add value to your property?

We pride ourselves on our high standards of workmanship

We will beat any like for like genuine written quote

- Block Paving • Tarmac (red or black)
- Patios • Resin Drives
- Concrete Recoloured • Brickwork
- Slabbing • Gravel • Landscaping
- Fencing • Property & Roof Repairs
- Driveway Maintenance
(Pressure cleaning & sealing – weed free)



For more info, please contact:

T: 0121 690 2271 T: 01926 940 854 T: 01564 791 228

M: 07875 086 397 E: joseph.dimension@icloud.com



Visit our website to view our current ranges and photos of work carried out in your local area www.dimensiondrivewaysltd.co.uk

Your Local District Councillor

1 ALCESTER AND RURAL  Mark Cargill T: 07580 572 945 E: mark.cargill@stratford-dc.gov.uk	10 CLOPTON  Jason Fojtik T: 07521 128 638 E: jason.fojtik@stratford-dc.gov.uk	19 NAPTON AND FENNY COMPTON  Nigel Rock T: 07971 343 065 E: nigel.rock@stratford-dc.gov.uk	28 STUDLEY WITH MAPPLEBOROUGH GREEN  Peter Hencher-Serafin T: 07971 342 943 E: peter.hencher-serafin@stratford-dc.gov.uk
2 ALCESTER TOWN  Susan Juned T: 07971 343 061 E: susan.juned@stratford-dc.gov.uk	11 ETTINGTON  Penny-Anne O'Donnell T: 07792 884 167 E: penny-anne.o'donnell@stratford-dc.gov.uk	20 QUINTON  Edward Fitter T: 07976 693 080 E: edward.fitter@stratford-dc.gov.uk	29 STUDLEY WITH SAMBOURNE  Neil Edden T: 07971 343 056 E: neil.edden@stratford-dc.gov.uk
3 AVENUE  John Riley T: 07971 342 938 E: john.riley@stratford-dc.gov.uk	12 GUILDHALL  Jenny Fradgley T: 01789 262 522 E: jenny.fradgley@stratford-dc.gov.uk	21 RED HORSE  John Feilding T: 07966 698 239 E: john.feilding@stratford-dc.gov.uk	30 TANWORTH-IN-ARDEN  Tony Dixon T: 07971 342 942 E: tony.dixon@stratford-dc.gov.uk
4 BIDFORD EAST  Daren Pemberton T: 07970 064 759 E: daren.pemberton@stratford-dc.gov.uk	13 HARBURY  Jacqui Harris T: 07773 201 795 E: jacqui.harris@stratford-dc.gov.uk	22 SHIPSTON NORTH  Trevor Harvey T: 07969 167 720 E: trevor.harvey@stratford-dc.gov.uk	31 TIDDINGTON  Kate Rolfe T: 01789 550 624 E: kate.rolfe@stratford-dc.gov.uk
5 BIDFORD WEST AND SALFORD  Bill Fleming T: 07971 342 945 E: bill.fleming@stratford-dc.gov.uk	14 HATHAWAY  Gill Cleeve T: 07971 343 051 E: gill.cleeve@stratford-dc.gov.uk	23 SHIPSTON SOUTH  Jo Barker T: 07748 968 712 E: jo.barker@stratford-dc.gov.uk	32 WELCOMBE  Tony Jefferson T: 01789 268 318 E: tony.jefferson@stratford-dc.gov.uk
6 BISHOPS ITCHINGTON  Christopher Kettle T: 07798 692 683 E: chris.kettle@stratford-dc.gov.uk	15 HENLEY-IN-ARDEN  Matt Jennings T: 07969 168 536 E: matt.jennings@stratford-dc.gov.uk	24 SHOTTERY  David Curtis T: 07971 343 084 E: david.curtis@stratford-dc.gov.uk	33 WELFORD-ON-AVON  Peter Barnes T: 01789 750 837 E: peter.barnes@stratford-dc.gov.uk
7 BISHOPTON  Victoria Alcock T: 07971 342 941 E: victoria.alcock@stratford-dc.gov.uk	16 KINETON  Christopher Mills T: 01926 641 309 E: christopher.mills@stratford-dc.gov.uk	25 SNITTERFIELD  Peter Richards T: 07970 588 516 E: peter.richards@stratford-dc.gov.uk	34 WELLESBOURNE EAST  Anne Parry T: 07917 117 737 E: anne.parry@stratford-dc.gov.uk
8 BRAILES AND COMPTON  Sarah Whalley-Hoggins T: 07971 342 948 E: sarah.whalley-hoggins@stratford-dc.gov.uk	17 KINWARTON  Gillian Forman T: 07971 342 950 E: gillian.forman@stratford-dc.gov.uk	26 SOUTHAM NORTH  Tony Bromwich T: 01789 267 575 E: tony.bromwich@stratford-dc.gov.uk	35 WELLESBOURNE WEST  Danny Kendall T: 01789 601 293 E: danny.kendall@stratford-dc.gov.uk
9 BRIDGETOWN  Ian Fradgley T: 07971 343 072 E: ian.fradgley@stratford-dc.gov.uk	18 LONG ITCHINGTON AND STOCKTON  Louis Adam T: 07971 342 940 E: louis.adam@stratford-dc.gov.uk	27 SOUTHAM SOUTH  Andrew Crump T: 01926 815 745 E: andrew.crump@stratford-dc.gov.uk	36 WOOTTON WAWEN  Ian Shenton T: 07971 343 074 E: ian.shenton@stratford-dc.gov.uk

HOMETOWN GLORY

What makes Stratford-upon-Avon glorious?
Sometimes it's hard to see where you live through fresh eyes

SHOP

Stratford Skyline range: bringing the past and present together for a piece of Stratford at home

EXHIBITION

Free Digital Diorama exhibition: discover the sites that shaped and inspired the work of the world's greatest playwright

TICKETS

CV37 residents' discounts: £10 standby tickets to shows and half price entry to *The Play's The Thing*

rsc.org.uk
01789 331111

*Terms and Conditions apply.



Supported using public funding by
ARTS COUNCIL ENGLAND

Photo by Sam Allard

THE FARM

Stratford upon Avon



| THE FARM STRATFORD UPON AVON |

THE FARM KINGS LANE SMITTERFIELD CV37 0QA

The Farm, located 4 miles out of Stratford upon Avon is a collective of artisan food producers, a whole food restaurant, farm shop and delicatessen.

We will support local brands and champion independent suppliers from our own and neighbouring counties.

Alongside production we will offer educational workshops, nutritional seminars and demonstrations with the intention to re-discover skills and traditions, from foraging courses to baking your own sourdough.

A butchers and fishmonger, baker, wine merchant, fermented foods, chilli farmer, deli and cheese monger, chocolatier will produce on site in our micro kitchens which can be viewed by the public.

Recently won Muddy Stillets 2019 Awards for 'Best Farm Shop/Deli' in Warwickshire
WWW.THEFARMSTRATFORD.CO.UK | @THEFARMSTRATFORD | 01789 731807
HELLO@THEFARMSTRATFORD.CO.UK



Hooray's
BRITISH GELATO KITCHEN

GELATO & SORBET
CAKE & COFFEE
WAFFLES & CREPES
SANDWICHES
MAC & CHEESE

OPEN DAILY **10% DISCOUNT**

TEL: 01789 296613 WITH THIS COUPON

WWW.HOORAYSGELATO.COM T&C'S APPLY

ROOFING REPAIRS LTD

ALL ROOFING WORK UNDERTAKEN

FROM MAJOR RE-ROOFING TO
MINOR DOMESTIC ROOF REPAIRS

- Flat Roofing
- Guttering Cleaned Out & Services from £39.00

ALL WORK GUARANTEED
COMPETITIVE PRICING, FREE ESTIMATES & ADVICE

t: 01789 868248 m: 07464 171431
e: roofingrepairs49@yahoo.com www.roofingrepairsltd.co.uk

We want to make it easier for victims of rape or sexual assault to come forward for treatment and support to access services and rebuild their lives.

The Blue Sky Centre, at George Eliot Hospital, Nuneaton, is the Sexual Assault Referral Centre (SARC) for Coventry & Warwickshire. Crisis Workers are available 24/7 365 days a year.

We support adult victims of rape and other sexual violence of any gender; whether or not you choose to report to the police. It is a confidential, non-judgemental and free service.

The Blue Sky Centre
George Eliot Hospital, Nuneaton, CV10 7DJ

0800 970 0370
www.blueskycentre.org.uk



RESTAURANT • HOTEL • HISTORIC • WEDDINGS



Stratford upon Avon's most historic hotel.
Centrally located - 2 minute walk from Shakespeare's attractions; The RSC, Shakespeare's Birthplace

Rother Street, Stratford-upon-Avon CV37 6NH
01789 297022 | whiteswanhotel@fullers.co.uk
www.white-swan-stratford.co.uk

Please quote **Summer 1450** when making a booking or enquiry
Email whiteswanhotel.events@fullers.co.uk for more information.

DriveCoDriveways Ltd

DRIVEWAY & LANDSCAPE SOLUTIONS

Henley in Arden: 01564 330 616 Solihull: 0121 607 8834
 Stratford: 01789 508 660 Mobile: 07785 507 103
 Email: Drivecoltd@gmail.com

Contact us today for a FREE DESIGN & FREE QUOTATION

OUR SERVICES INCLUDE

- Block Paving • Lift & Relay Drives
- Fencing • Patios • Tarmacing
- Brickwork • Slabbing • Gravel
- Driveway Repairs
- Clean & Seal Drives
- Driveway Maintenance • Garden Design
- Roofing Repairs • UPVC Fascias & Downpipes



WORK FULLY GUARANTEED FOR 5 YEARS

No deposits taken - No subcontractors used

Check out samples of our work on our website
www.DriveCoLtd.com

Branches throughout the Midlands

Head Office: Forward House,
 17 High Street, Henley in Arden,
 Warwickshire B95 5AA



Company Reg. No: 10560471 Registered in England & Wales



There's a great opportunity to join our Reception and Nursery classes in September 2019



Hampton Lucy C of E Primary School and Nursery

We would like to warmly welcome prospective children and their parents to visit our Nursery and Reception class.

We can offer your child

- A small rural school with a Christian ethos
- A leafy green learning environment and the opportunity to thrive
- A varied curriculum



H Please contact our school office on **01789 840398** and we would welcome the opportunity to show you around our school.

www.hamptonlucyschool.org.uk



LOVE THE SUN
 PROTECT YOUR EYES

Conditions apply. Ask in-store for details.

FREE EYE EXAMINATION
 when you spend £59 or more

New sunglasses range from **£29**

Prescription sun lenses from **£59** + price of frame



Find us on **Wood Street, Stratford Upon Avon**
 Call **01789 290 007**
 Or visit visionexpress.com

vision express
 VISION.TAKEN SERIOUSLY.

Keeping safe in the community

– how Supported Villages is lending a helping hand

Supported Villages is a rural community crime prevention initiative funded jointly by the Warwickshire Police and Crime Commissioner Philip Seccombe and parish councils. The project is also being supported by SmartWater, Cremark and BikeRegister.

In gaining Supported Village status, residents are demonstrating that their community is not a soft touch for rural crime, with households and communities being offered crime prevention advice on how to protect themselves and improve their security with a number of proven crime reduction techniques.

The Supported Villages programme is being driven by Your District Council's Rural Crime Advisors in close partnership with Warwickshire Police, local parish councils and Neighbourhood Watch.

This proactive and sustainable initiative has been launched in the village of Long Itchington, where several events have taken place and residents have benefited from having their belongings security marked.

The aim is to get at least 50% of the village to sign up to the project, which will provide a real deterrent to any would-be-thieves intent on targeting rural communities.

Village, street and household signage will provide additional deterrents to criminals who will quickly identify that the Supported Village has taken a robust stand against acquisitive rural crime.

The village of Oxhill is scheduled to become the next Supported Village, with several other parish councils now expressing a real interest in bringing this initiative to their villages in the coming summer months.

Your District Council's Rural Crime Advisors, who are funded by the Police and Crime Commissioner, have been engaging with parish councils in the district and providing presentations on the Supported Villages initiative at a number of parish council meetings.

Rural Crime Advisor Bob Church said:

This initiative provides villages and communities with a real deterrent to rural crime. Security marking items using industry recognised methods is proven to significantly reduce your chances of having valuables stolen.

I am pleased that parish councils have been so receptive to the project and working closely with Warwickshire Police and partners has added real value and momentum to the initiative.

I am also pleased that these community events have provided an opportunity for Neighbourhood Watch schemes to engage with new residents to our expanding villages - you cannot overestimate the importance of having vigilant local residents in combating rural crime.

At the conclusion of each village initiative, parish councils will be provided with a community crime prevention toolbox, which will ensure that anyone in the community can have their items marked in the future.

Warwickshire Police and Crime Commissioner Philip Seccombe said:

Communities can play a major part in the fight against crime by ensuring they take sensible precautions to protect their valuables and ensure that everyone knows that the village as a whole is security-conscious and working together with the local police to deter criminal activity.

I'm delighted that Long Itchington has become the first to roll-out Supported Village status in South Warwickshire, closely followed by Oxhill, and I look forward to seeing more areas coming on board in the future.

Barbara Atkins, from Long Itchington Parish Council, said: "We are delighted to take part in the Supported Villages initiative in Long Itchington as we want to encourage residents to get more involved in taking action to protect their own property and possessions.

"At both the events we have hosted so far it is clear that the community have welcomed the extra measures on offer and it has shown a visible police presence, which is very reassuring."

Martin Newman from Long Itchington Neighbourhood Watch added: "The residents appreciated the opportunity to securely mark their property with overt and covert security marking products and were reassured by the additional police presence."

Inspector Allison Wiggin, Warwickshire Police, said: "The police and partners work closely to protect rural communities from harm, so it is great to see the rural communities empowering themselves in the fight against crime in their area. I look forward to seeing more of these coming online as the year progresses."



For more information about the Supported Villages initiative please contact: Bob Church on **01789 260200** or **robert.church@stratford-dc.gov.uk**

For further advice on tackling rural crime please visit the Warwickshire Rural Watch website at:

www.warwickshireruralwatch.co.uk



ARE YOU A...

RESPONSIBLE DOG OWNER?



KEEP YOUR DOG UNDER CONTROL

Keep dogs on a short lead around cows and sheep

CLEAN UP AFTER YOUR DOG

Bag it and bin it wherever you are

NEVER GET BETWEEN COWS AND CALVES

Walk round the herd and re-join the path when safe

IF CATTLE FOLLOW YOU STAY CALM

Walk quickly and quietly round the herd

IF YOU FEEL THREATENED BY CATTLE

Release your dog and get to safety separately



Many dog attacks on sheep happen when the dog has escaped from home.



RAISING THE BAR FOR RETIREMENT LIVING



Retirement living in Stratford-upon-Avon
1 and 2 bedroom apartments from
£144,000 (60% share)

NOW AVAILABLE

ROOF TOP
BAR

- Apartments designed specifically for retirement living
- Just a two minute walk from Stratford-upon-Avon station
- Available through Shared Ownership

Marketing Suite open everyday 10am to 5pm

Brunel Way, off Alcester Road, Stratford-upon-Avon, CV37 0AH

ardenquarter.co.uk

01789 266 233



Arden Quarter



“How you sell matters. What your process is matters. But how your customers feel when they engage with you matters more.”



Taylor Raif Estates

01789 532612

www.taylorraifestates.co.uk





WELFORD-ON-AVON



UNIQUE RIVERSIDE HOMES

Avon View is a new gated riverside development of 24 executive homes beautifully-situated with truly inspiring views over the River Avon. Choose from a sophisticated collection of 1-bed to 5-bed homes, steeped in local history.

PRICES FROM
£475,000 to £895,000



DUCHYHOMES.CO.UK